

March 2016

Editor: Denise Webb Email: denise.webb@oxleas.nhs.uk

We are delighted to have received such positive feedback from our first newsletter. We hope you enjoy this edition and look forward to any comments, suggestions or questions you may have.



Exploration through nature project

F Block, Child Development Centre

Plans are under way to redevelop F Block (old Elmstead Unit) as the Child Development Centre. An interior designer has been working with the children and young people who use the service in a series of workshops to develop design ideas for a fun interior art scheme. The ideas will be used for wall graphics and way finding signage in the unit, and externally on the covered walkway so the new children's building will be clearly distinguishable on the site.

New staff car park permits

Paper permits with a unique reference number will replace the current plastic permits at the end of March. A reminder to all staff requiring the new paper permit to supply their details to their car park lead to ensure permits will be issued in time for the new release.

Wheelchairs

New wheelchairs have been purchased to provide patients with improved transport around the site. Extensive research went into ensuring that suitable chairs were purchased, taking into account comments and feedback from staff, patients and carers. Initially these have been located in the B Block entrance.

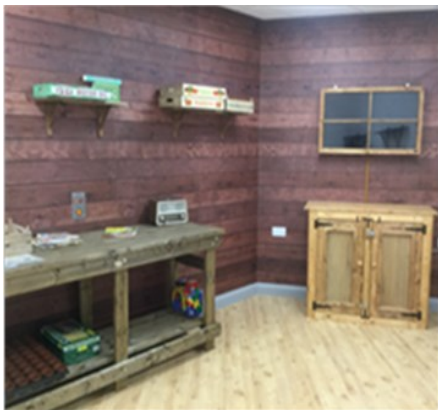


Woodlands Unit – Holbrook Ward

Holbrook Ward within the Woodlands Unit is nearing completion. The dementia ward has been refurbished to the latest dementia care standards. The design has maximised visibility to enable staff to see patients as much as possible and space has been created for patients to walk around independently. Research shows that older

people benefit from higher light levels; this has been provided with windows facing out to the garden and additional lighting. Windows are low and the glass patio doors give views of nature which promote feelings of wellbeing. The refurbishment has included Reminiscence Therapy Pods which help improve the wellbeing of patients, allowing them to reminisce and talk about their experiences. There is a lounge area, launderette, kitchen,

activity room, potting shed, ladies' salon and activity room, which visitors can also enjoy, giving the patient a much more stimulating time when they have guests in. Deputy Matron Stacey Blackford said: "We're going back to a ward where patients can feel at home, comfortable, happy and relaxed. New and exciting times are ahead for patients, carers and staff. The whole team is very excited."



News in Brief

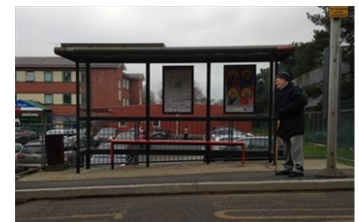
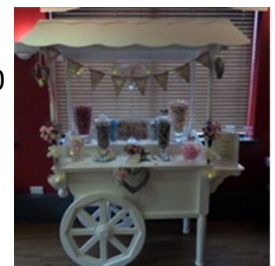
World Kidney Day - Diaverum will be holding a kidney awareness day on Thursday 10 March in main reception from 10am till 12 noon. They will have a delightful cart full of homemade cakes for sale to raise funds for the National Kidney Federation (NKF)

Easter Song - Tuesday 22 March the school choir will be in B Block reception from 11.30 till 12.30. Come and hear their delightful songs for Easter.

Redecoration - A painting programme will commence the beginning of March along the blue line corridor from A to B Block and some other communal areas. We hope to keep disruption to a minimum and thank you in advance for your co-operation during this time.

A roadway relining programme will be starting soon. Entrances and exits to car parks, crossings and the mini roundabout will be refreshed.

Making QMH More Accessible - New bus stops with higher kerbs have been completed to improve access to and from the buses.



Your news and questions

If you have any interesting news from Queen Mary's new or old you would like to share, views about anything within this newsletter, any questions you would like to ask about what is happening around Queen Mary's, get in touch. If you would like this newsletter emailed to you, contact:
denise.webb@oxleas.nhs.uk