

Contact us

Oxleas NHS Foundation Trust
Pinewood House
Pinewood Place
Dartford
Kent
DA2 7WG

T: 01322 625700

E: foundation.trust@oxleas.nhs.uk

Cover image: an artist's impression of what the new Cancer Centre will look like when it opens to patients in 2016

November 2014

qmh.oxleas.nhs.uk

Oxleas 
NHS Foundation Trust

Oxleas


Guy's and St Thomas' 
NHS Foundation Trust

Cancer Care Closer to Home

Welcome to Queen Mary's Hospital

Improving lives

oxleas.nhs.uk



A new Cancer Centre will open at Queen Mary's Hospital in 2016.

One of a number of exciting developments in our ambitious redevelopment plan, the centre will offer:

- Radiotherapy
- Chemotherapy
- Information and support for cancer patients and their families
- A state-of-the-art new building

As part of a three-year transformation programme of Queen Mary's Hospital and its services, Oxleas NHS Foundation Trust has begun a major £30 million investment programme to refurbish the hospital site and construct new buildings.

The Cancer Centre

Most cancer patients from Bexley, Bromley and Greenwich will soon be able to get radiotherapy and chemotherapy treatment locally thanks to the development of a new Cancer Centre at Queen Mary's Hospital in Sidcup.

Currently these patients have to travel to Guy's and St Thomas' in London - but that will all change when the brand new facility opens in 2016.

Guy's and St Thomas' staff will provide **life-saving radiotherapy and chemotherapy services** in our new state-of-the-art Cancer Centre, which will also include an information and advice service for patients and their families.

This will enable most people to receive high quality, specialist cancer treatment locally, rather than travel to London as is currently the case.

Other developments

Oxleas is undertaking a number of developments across the Queen Mary's Hospital site as part of an exciting three year transformation programme.

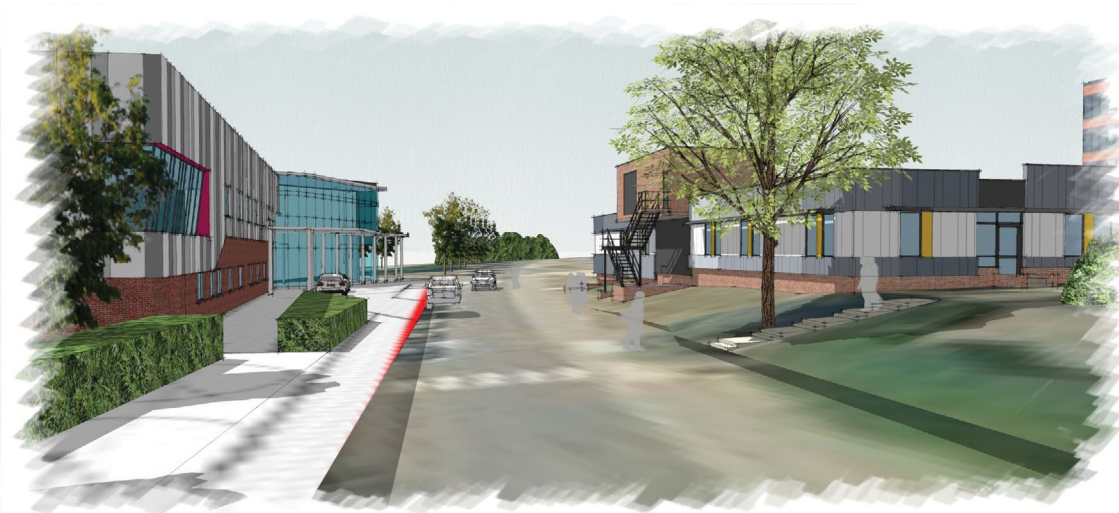
We have started work on a new **Kidney Treatment Centre**, where services will also be run by Guy's and St Thomas' providing a comprehensive range of kidney services to the local community, including renal dialysis and medicine.

Additionally there will be a new **day-surgery unit**, a **children's centre** and a new **urgent care centre**.

The transformation programme is due to finish in 2016, with some parts already complete, such as the new cafe in B block and landscaping works.

To find out more go to:

qmh.oxleas.nhs.uk



An artist's impression of what the new Cancer Centre and Kidney Treatment Centre will look like when they open to patients in 2016